



*funerals, wakes &
memorials guide*
at the Hyundai Marine Sport Centre



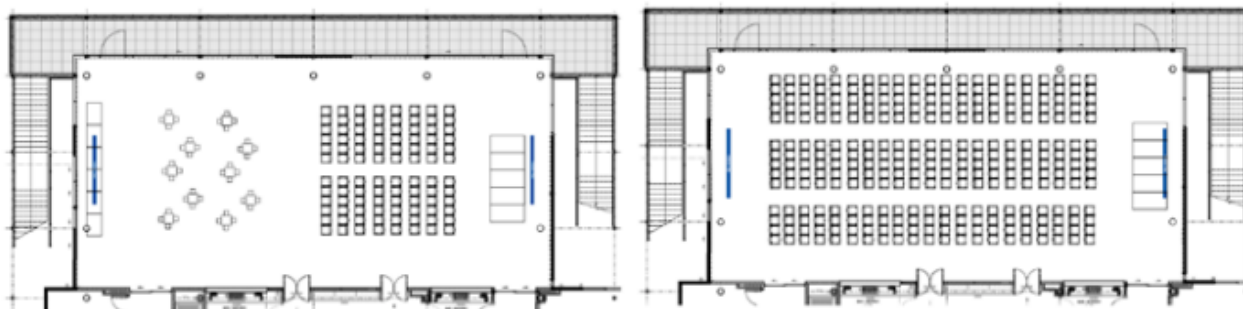
TE KAWAU ROOM



At Akarana, we can offer something unique from your typical funeral home with large open spaces and beautiful sea views. Our team will work with you to honour the memory of your loved one in a befitting way. With seating for services of up to 320 guests, the room can then be flipped for the wake or guests can move to another space to mingle and reminisce.

CAPACITY

Banquet 200 pax | Theatre 320 pax | Cocktail 350 pax



Included Furniture & AV:

- 300x Chairs
- 10x Banquet rounds with linen
- 10x Bar leaners with stools
- 1x Lectern with gooseneck microphone
- 1x 3x2m stage
- 2x Projectors and screens
- 4x Handheld microphones
- 2x 65" OLED screens (above bars)



RAYC & RANGITOTO ROOMS | COMBINED



It's never the right time to say goodbye, but at Akarana, we do our best to give you the right place at our light-filled, open venue with beautiful sea views.

Watch as the trans-space wall disappears into a cupboard, combining the RAYC Lounge and Rangitoto Room into one large stunning space for up to 200 guests.

CAPACITY

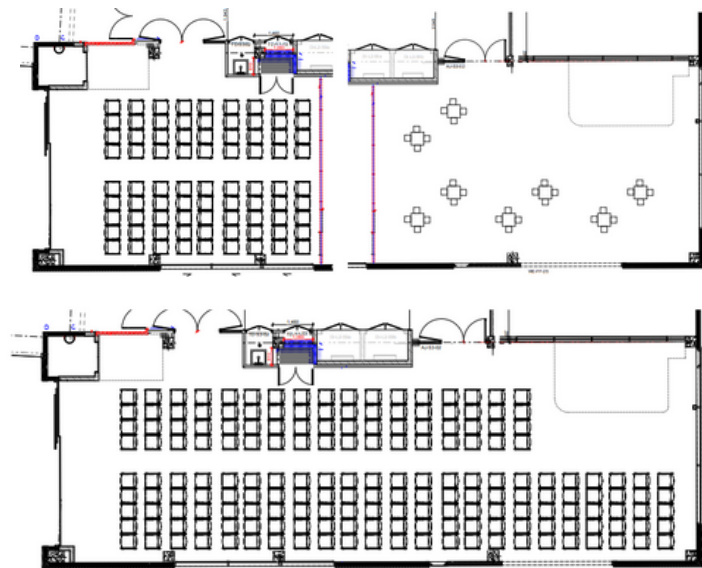
RAYC | Theatre 100 pax | Cocktail 100 pax

RANGITOTO | Theatre 90 pax

COMBINED | Theatre 150 pax | Cocktail 200 pax

Included Furniture & AV:

- 150x Chairs
- 6x Bar leaners with stools
- 2x Lounge suites with tables
- 2x 75" OLED screens
- 4x Handheld microphones



FOOD & BEVERAGE



Fresh. Local. Delicious. Hand Made.

We proudly make (almost) everything in house - serving you some of the best event catering you've ever tried!

We provide both catering and beverages with plenty of options to suit your needs.

Both Te Kawau and RAYC have in room bars, which can be opened with a minimum spend.

Tea and coffee is available for \$4.5 per person + GST.

Click on the images below to view our menus



BEVERAGES



SMALL BITES



CANAPÉS



FAQ

Can I bring my own catering?

No - all catering must be provided by our in-house team

Can we have the casket on site?

Yes - a representative from Ngati Whatua Ōrākei will bless the space after every funeral where there is a casket on site.

Do you allow BYO?

Yes - you can BYO bottled beer, wine or champagne (with a corkage charge). You can't however BYO non-alcoholic or tap beers.

What is included in the room hire fee?

The room hire fee includes the standard furniture set up, in house AV, cleaning plus your dedicated Function Manager for the event. Any additional requirements will be charged separately.

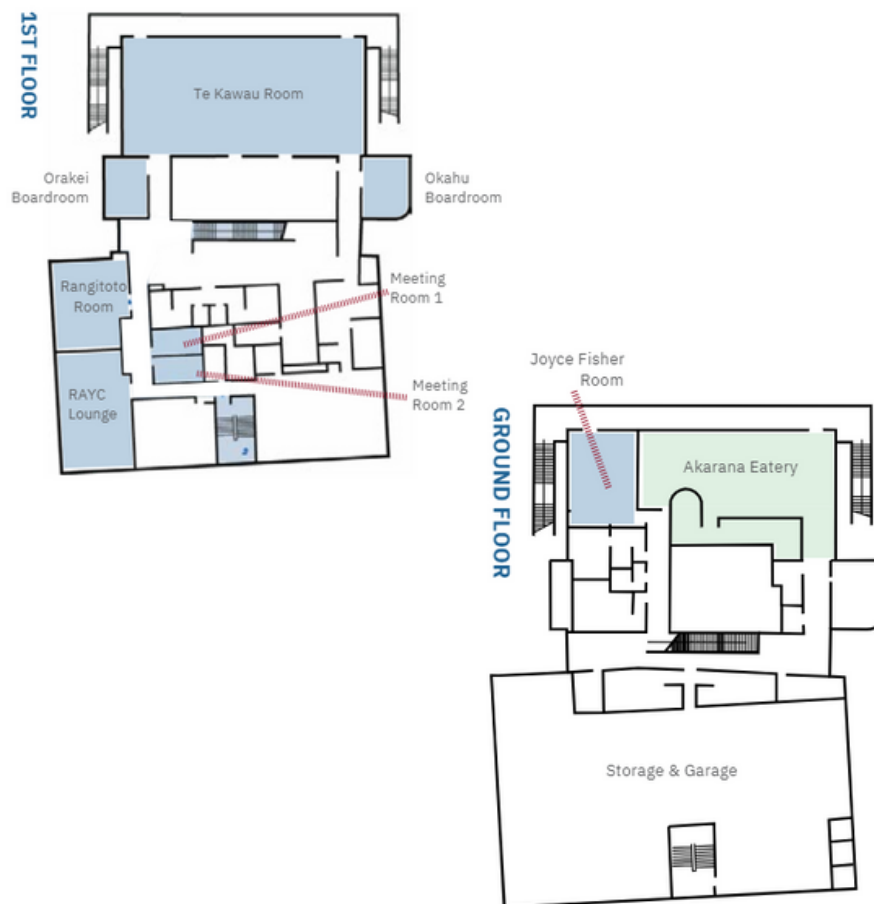
Is there parking onsite?

We have around 80 free parking spaces and an additional 80+ paid parking available. The main road also offers plenty of free parking. You can view the map [here](#)

Can we bring decorations?

You are welcome to bring your own table decorations, florals and photo displays. Nothing should be affixed to the walls or ceiling. We ask please that you don't bring any single use plastic and take all decorations home with you at the end of the event. Anything left behind will be disposed of. You will be liable for any damage caused by decorations.

OUR SPACES



PRICING

Where possible we try to offer all inclusive pricing so there are no hidden extras. For most events your quote will consist of room hire, food, beverages. Extra charges, if requested may include, additional AV, furniture rental or additional pack in/pack out time.

All prices exclude GST unless specified otherwise.

Room Hire Fees

FIRST FLOOR	THEATRE	COCKTAIL	HALF DAY 8am-12pm	FULL DAY 8am-5pm
Te Kawai Room	320	350	\$2300	\$3850
RAYC Lounge	75	80	\$1380	\$1725
Rangitoto Room	75	60	\$1380	\$1725
RAYC Rangitoto Combined	150	170	\$1840	\$2300



www.akaranamarinesports.co.nz/venue-hire

Email events@akarana.co.nz and one of our team will be in touch.

